

Major Key Signatures in the Treble Clef

DIRECTIONS: Write the correct name of each major key signature on the line provided.

1.  _____

4.  _____

7.  _____

2.  _____

5.  _____

8.  _____

3.  _____

6.  _____

9.  _____

DIRECTIONS: In the box, write the correct sharps for the following sharp key signatures.

10. 
Key of G

11. 
Key of A


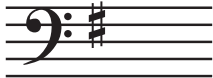
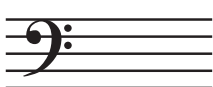
12. 
Key of D

DIRECTIONS: In the box, write the correct flats for the following flat key signatures.

13. 
Key of B \flat

14. 
Key of F

15. 
Key of A \flat

KEY SIGNATURES**Quiz 36****Major Key Signatures in the Bass Clef****DIRECTIONS:** Write the correct name of each major key signature on the line provided.1.  _____4.  _____7.  _____2.  _____5.  _____8.  _____3.  _____6.  _____9.  _____**DIRECTIONS:** In the box, write the correct sharps for the following sharp key signatures.10. 

Key of D

11. 

Key of E

12. 

Key of G

DIRECTIONS: In the box, write the correct flats for the following flat key signatures.13. 

Key of Eb

14. 

Key of F

15. 

Key of Bb

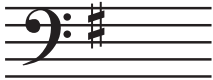
Major Key Signatures in Treble and Bass Clefs

DIRECTIONS: Write the correct name of each major key signature on the line provided.

1.  _____

4.  _____

7.  _____

2.  _____

5.  _____

8.  _____

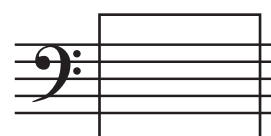
3.  _____

6.  _____

9.  _____

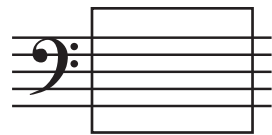
DIRECTIONS: In the box, write the correct sharps for the following sharp key signatures.

10. 
Key of E

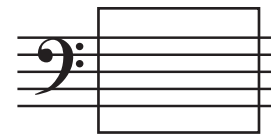
11. 
Key of D

12. 
Key of G

DIRECTIONS: In the box, write the correct flats for the following flat key signatures.

13. 
Key of B \flat

14. 
Key of A \flat

15. 
Key of F







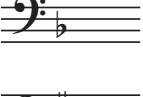

Quiz 38

Know Your Key Signatures

DIRECTIONS: Find the correct key signature in the second column and write it in the blank space.

- | | | |
|----------|---|----|
| 1. _____ |  | D |
| 2. _____ |  | F |
| 3. _____ |  | Bb |
| 4. _____ |  | A |
| 5. _____ |  | G |
| 6. _____ |  | Eb |
| 7. _____ |  | Ab |
| 8. _____ |  | E |

DIRECTIONS: Find the correct key signature in the second column and write it in the blank space.

- | | | |
|-----------|---|----|
| 9. _____ |  | F |
| 10. _____ |  | D |
| 11. _____ |  | Bb |
| 12. _____ |  | Eb |
| 13. _____ |  | A |
| 14. _____ |  | E |
| 15. _____ |  | G |
| 16. _____ |  | Ab |

Note Naming with Key Signatures and Accidentals – Treble Clef

DIRECTIONS: What is the letter name of the note in the box? Write the correct answer in the blank space.

1.  _____

6.  _____

2.  _____

7.  _____

3.  _____

8.  _____

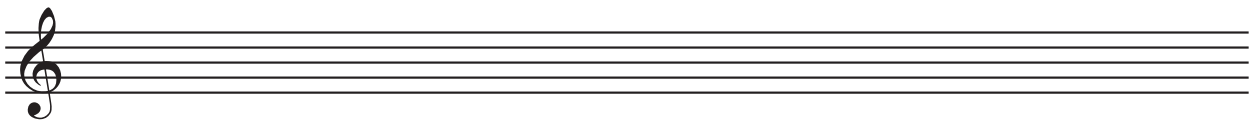
4.  _____

9.  _____

5.  _____

10.  _____

DIRECTIONS: Using half notes and accidentals, draw the following notes in the treble clef. Do not use ledger lines.
Note: There may be more than one correct answer.

B \flat D \sharp E \flat F \sharp E \natural A \flat


DIRECTIONS: Using whole notes and accidentals, draw the following notes in the treble clef. Do not use ledger lines.
Note: There may be more than one correct answer.

C \flat G \sharp D \natural A \natural F \natural D \flat


Note Naming with Key Signatures and Accidentals – Bass Clef

DIRECTIONS: What is the letter name of the note in the box? Write the correct answer in the blank space.

1.  _____

6.  _____

2.  _____

7.  _____

3.  _____

8.  _____

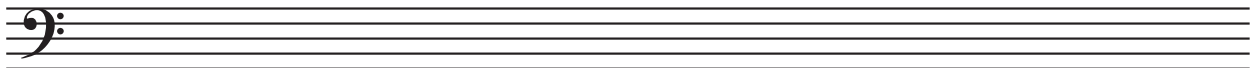
4.  _____

9.  _____

5.  _____

10.  _____

DIRECTIONS: Using quarter notes and accidentals, draw the following notes in the bass clef. Do not use ledger lines.
Note: There may be more than one correct answer.



C#

Db

Cb

Ab

F#

Gb

DIRECTIONS: Using half notes and accidentals, draw the following notes in the bass clef. Do not use ledger lines.
Note: There may be more than one correct answer.



Bb

Eb

Db

G#


D#

Eb

Quiz 49

Accidentals in Treble and Bass Clefs

DIRECTIONS: What is the letter name of the note in the box? Write the correct answer in the blank space.

1.  _____

6.  _____

2.  _____

7.  _____

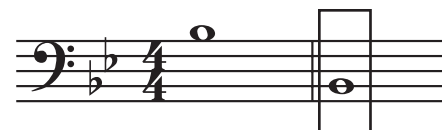
3.  _____

8.  _____

4.  _____

9.  _____

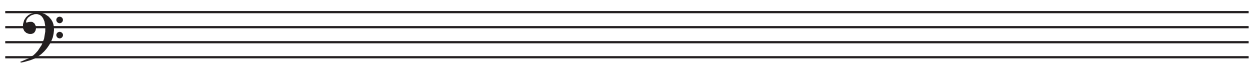
5.  _____

10.  _____

DIRECTIONS: Using half notes and accidentals, draw the following notes in the treble clef. Do not use ledger lines.
Note: There may be more than one correct answer.

A \flat G \sharp B \natural C \sharp F \natural D \flat

DIRECTIONS: Using whole notes and accidentals, draw the following notes in the bass clef. Do not use ledger lines.
Note: There may be more than one correct answer.

E \natural C \flat D \sharp F \sharp B \flat G \sharp