

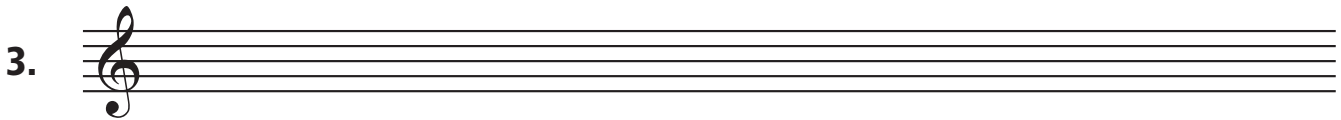
Note Names – Treble Clef

DIRECTIONS: Write the correct letter name under each note in the treble clef.





DIRECTIONS: Draw quarter notes in the treble clef for each of the following letter names. Don't forget to draw the stem correctly. (Notes below the 3rd line have stems going up. Notes on the 3rd line and above have stems going down.) Do not use ledger lines. In some cases, there may be more than one correct answer.



A

C

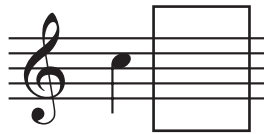
F

D

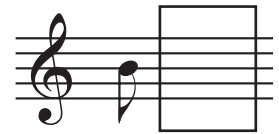
G

B

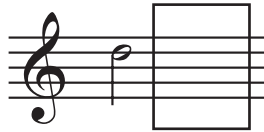
4. Draw a quarter note F that is higher than the note printed on the staff.



7. Draw an eighth note D that is lower than the note printed on the staff.



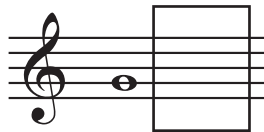
5. Draw a half note A that is lower than the note printed on the staff.



8. Draw a quarter note E that is higher than the note printed on the staff.



6. Draw a whole note C that is higher than the note printed on the staff.



9. Draw a half note G that is lower than the note printed on the staff.



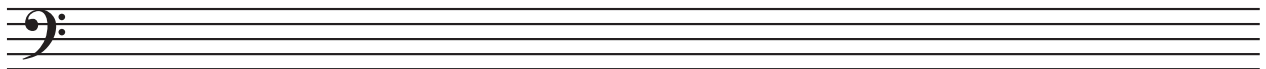
Quiz **24****Note Names – Bass Clef**

DIRECTIONS: Write the correct letter name under each note in the bass clef.

1. 

2. 

DIRECTIONS: Draw quarter notes in the bass clef for each of the following letter names. Don't forget to draw the stem correctly. (Notes below the 3rd line have stems going up. Notes on the 3rd line and above have stems going down.) Do not use ledger lines. In some cases, there may be more than one correct answer.

3. 

G

A

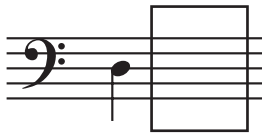
C

F

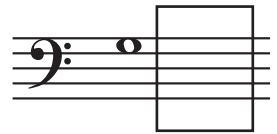
B

D

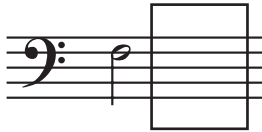
4. Draw a quarter note B that is higher than the note printed on the staff.



7. Draw a whole note G that is lower than the note printed on the staff.



5. Draw a half note C that is lower than the note printed on the staff.



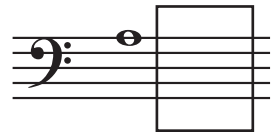
8. Draw an eighth note A that is higher than the note printed on the staff.



6. Draw a quarter note F that is higher than the note printed on the staff.



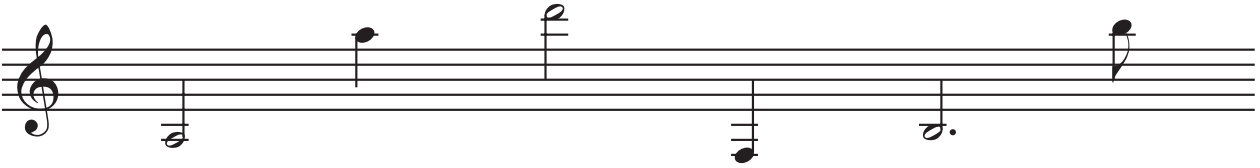
9. Draw a whole note E that is lower than the note printed on the staff.




Quiz 25

Ledger Lines

DIRECTIONS: Write the correct letter name under each note in the treble clef.

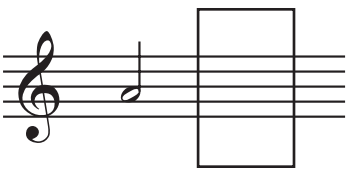
1. 

DIRECTIONS: Write the correct letter name under each note in the bass clef.

2. 

DIRECTIONS: Use ledger lines to draw the correct notes in the boxes.

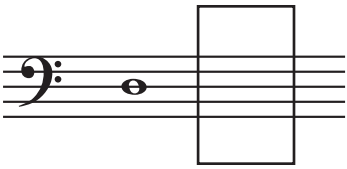
3. This is a half note A. To its right, draw another half note A above the staff.



5. Now draw a half note A below the staff.



4. This is a whole note D. To its right, draw another whole note D below the staff.



6. Now draw a whole note D above the staff.

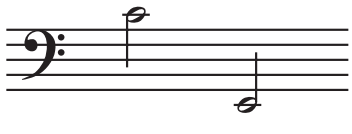


DIRECTIONS: Circle the correct note for the questions below.

7. Which note is a B?



9. Which note is a C?



8. Which note is a G?



10. Which note is an F?



NOTE NAMES

Quiz 26

Sharps and Flats – Treble Clef

DIRECTIONS: Write the correct note name under each note in the treble clef.

1. 

2. 

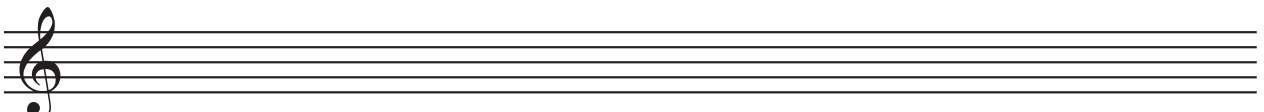
DIRECTIONS: Circle the note which is higher.

3.  4.  5. 

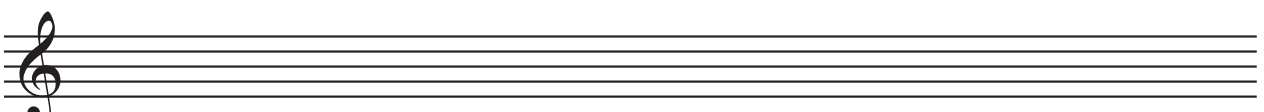
DIRECTIONS: Circle the note which is lower.

6.  7.  8. 

DIRECTIONS: Using quarter notes and accidentals, draw the following notes in the treble clef. Do not use ledger lines.
Note: There may be more than one correct answer.

9. 
B \flat G \sharp D \flat F \sharp A \flat C \sharp

DIRECTIONS: Using half notes and accidentals, draw the following notes in the treble clef. Do not use ledger lines.
Note: There may be more than one correct answer.

10. 
A \sharp D \sharp G \flat E \flat C \flat A \flat

Quiz 27

Sharps and Flats – Bass Clef

DIRECTIONS: Write the correct note name under each note in the bass clef.

1. 

2. 

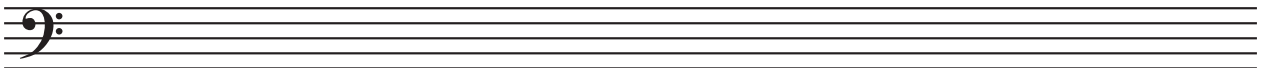
DIRECTIONS: Circle the note which is higher.

3.  4.  5. 

DIRECTIONS: Circle the note which is lower.

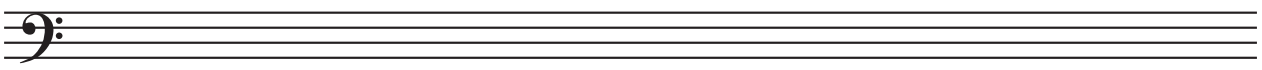
6.  7.  8. 

DIRECTIONS: Using quarter notes and accidentals, draw the following notes in the bass clef. Do not use ledger lines.
Note: There may be more than one correct answer.

9. 

B \flat F \sharp C \sharp D \sharp B \sharp G \flat

DIRECTIONS: Using half notes and accidentals, draw the following notes in the bass clef. Do not use ledger lines.
Note: There may be more than one correct answer.

10. 

A \flat E \flat G \sharp D \flat F \flat C \flat

NOTE NAMES**Quiz 28****Sharps and Flats – Two Clefs****DIRECTIONS:** Write the correct note name under each note in the treble clef.

1. 

2. 

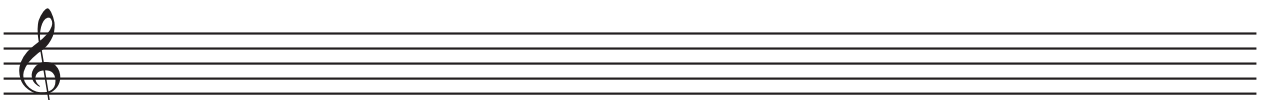
DIRECTIONS: Circle the note which is higher.

3.  4.  5. 

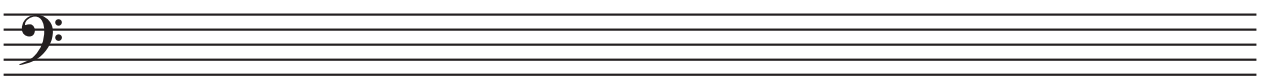
DIRECTIONS: Circle the note which is lower.

6.  7.  8. 

DIRECTIONS: Using quarter notes and accidentals, draw the following notes in the treble clef. Do not use ledger lines.
Note: There may be more than one correct answer.

9. 
 Ab F# Db C# Bb Gb

DIRECTIONS: Using half notes and accidentals, draw the following notes in the bass clef. Do not use ledger lines.
Note: There may be more than one correct answer.

10. 
 Bb G# Eb D# F# Ab

NOTE NAMES

Quiz 29

Identifying Notes in the Treble Clef

DIRECTIONS: Circle every note that is a G.

1. 

DIRECTIONS: Circle every note that is an F.

2. 

DIRECTIONS: Circle every note that is an A.

3. 

DIRECTIONS: Circle every note that is a B.

4. 

DIRECTIONS: Circle every note that is an E.

5. 

DIRECTIONS: Circle every note that is a C.

6. 

DIRECTIONS: Circle every note that is a D.

7. 

DIRECTIONS: Circle every note that is an F.

8. 

Quiz 30

Identifying Notes in the Bass Clef

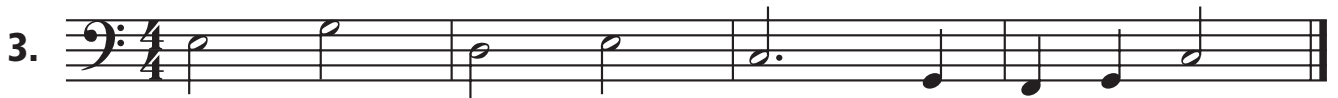
DIRECTIONS: Circle every note that is an F.



DIRECTIONS: Circle every note that is a G.



DIRECTIONS: Circle every note that is a C.



DIRECTIONS: Circle every note that is a D.



DIRECTIONS: Circle every note that is a B.



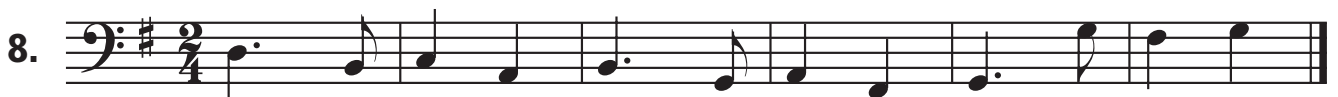
DIRECTIONS: Circle every note that is an A.



DIRECTIONS: Circle every note that is an E.



DIRECTIONS: Circle every note that is a G.



Name: _____

Class: _____

NOTE NAMES

Quiz 31

Match the Notes – Treble Clef

DIRECTIONS: What is the name of each note? Write the correct answer from the second column in the space.

1. _____		A
2. _____		B \flat
3. _____		C
4. _____		D \sharp
5. _____		E
6. _____		F \sharp
7. _____		G \flat
8. _____		D
9. _____		E \flat
10. _____		A \flat

Quiz **32****Match the Notes –Bass Clef**


DIRECTIONS: What is the name of each note? Write the correct answer from the second column in the space.

1. _____  **A \flat**

2. _____  **B**

3. _____  **C \sharp**

4. _____  **D**

5. _____  **E \flat**

6. _____  **F**

7. _____  **G \sharp**

8. _____  **C \flat**

9. _____  **E**

10. _____  **F \sharp**

Quiz 33

Note Names – Treble and Bass Clef

DIRECTIONS: Draw an X over any note that is not an F.

1.

DIRECTIONS: Directions: Draw an X over any note that is not an A.

2.

DIRECTIONS: Directions: Draw an X over any note that is not an E.

3.

DIRECTIONS: Directions: Draw an X over any note that is not a D.

4.

DIRECTIONS: In the following examples, draw an X over the measure that does not have two notes with the same letter name.

5.

6.

DIRECTIONS: True or False? Are the notes the same? Circle T or F.

7. = T F 9. = T F

8. = T F 10. = T F

NOTE NAMES

Quiz 34

Know Your Notes in Two Clefs

DIRECTIONS: In each example below, draw an X over the measure that does not have three notes with the same letter name.

1.

3.

2.

4.

DIRECTIONS: In the box following each whole note, draw another whole note with the same letter name. The note may be in the space above or below the staff, but do not use ledger lines.

5.

6.

DIRECTIONS: In the following two examples, a whole note is shown in the treble clef. In the blank bass clef, draw a whole note that has the letter name as the note shown in the treble clef. Do not use ledger lines. NOTE: There may be more than one correct answer.

7.

8.

DIRECTIONS: In the following two examples, a whole note is shown in the bass clef. In the blank treble clef, draw a whole note that has the letter name as the note shown in the bass clef. Do not use ledger lines. NOTE: There may be more than one correct answer.

9.

10.